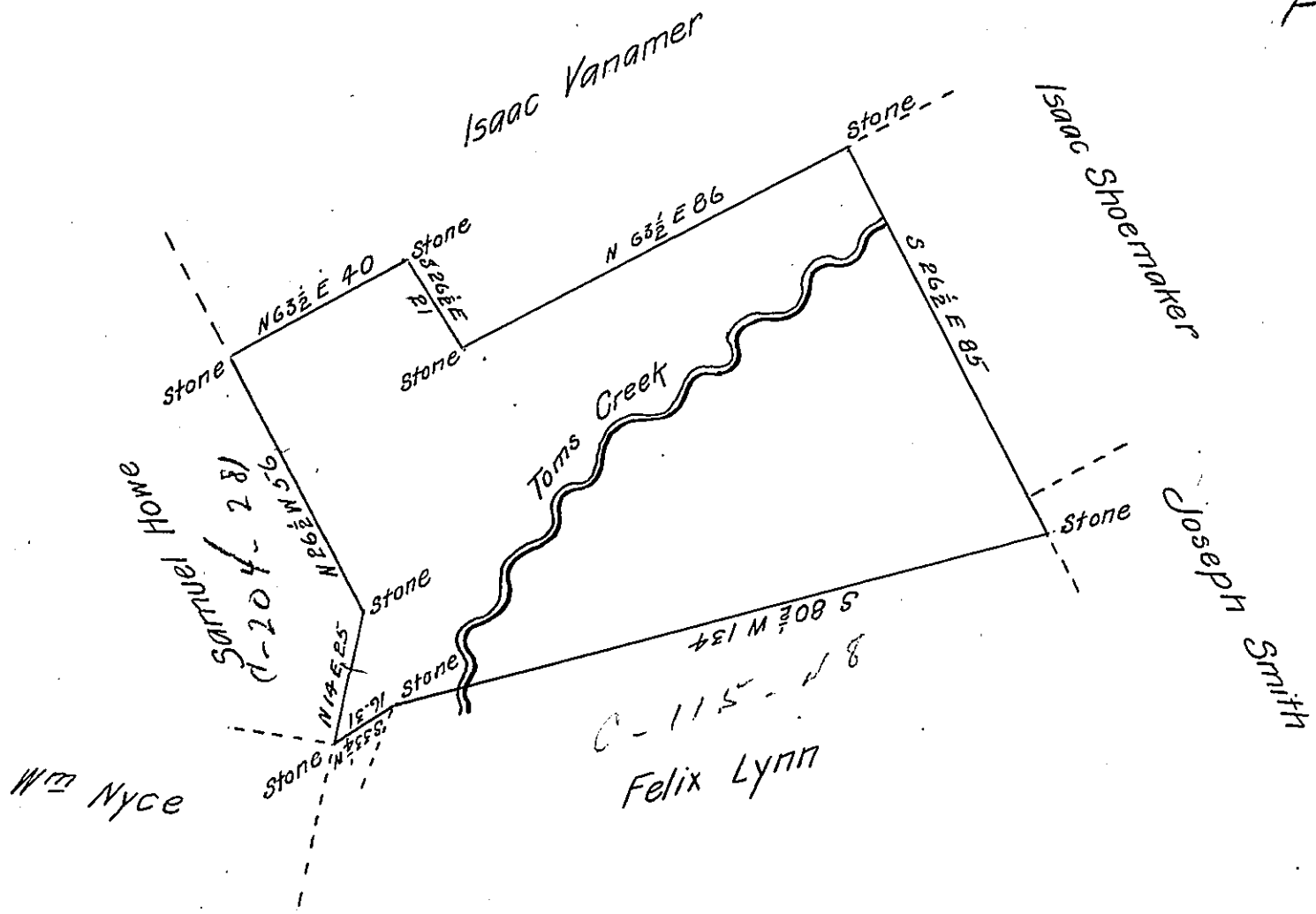


Lehman -  
PIKE.

✓



By Virtue of a Warrant dated the 25<sup>th</sup> July 1825 and an order of resurvey dated the 12<sup>th</sup> day of May 1859. received the 18<sup>th</sup> day of May 1859. Surveyed the 10<sup>th</sup> day of November 1859 to Moses Litts for George Stewart the above described tract of land situate in Lehman (formerly Delaware) Township in the County of Pike adjoining lands Surveyed to Isaac Vanamer Isaac Shoemaker and others. Containing fifty four acres and forty one perches and allowance of six per Cent for Roads &c.

Pr. John Layton C.S.

To John Rowe Esquire  
Surveyor General of Penna.

IN TESTIMONY that the above is a copy of the original remaining on file in the Department of Internal Affairs of Pennsylvania, made conformably to an Act of Assembly approved the 16th day of February, 1833, I have hereunto set my Hand and caused the Seal of said Department to be affixed at Harrisburg, this fifteenth day of November 1905.

*Loac D. Brown*  
Secretary of Internal Affairs.